



NUS Students' Green Fund: working with the community

Monday 14 July, 12:00-13:00

Speaker(s):

Emily Thompson-Bell, NUS

Teresa Sheppard, Roehampton Students' Union

Red Kellie, University of Newcastle Students' Union

Anna-Marie Vickerstaff, Leeds University Union

Contact Emma: easton@eauc.org.uk / 01242 71 4321

Students' Green Fund Community

Growhampton

What is Growhampton



- Sustainability project with a big focus on food growing
- Established productive food growing sites on our university campus grounds
- Opened a café specialising in local, organic, ethical food
- Working with the community to engage more people and strengthen the social aims of the project



Setting up our growing spaces

First task to set up our growing spaces

Worked with:

- Cultivate London
- The Big Dig
- Give & Gain 2014



Community café



- Open to the community
- Community feel and spirit
- Supporting community partners

Partnership with The Feel Good Bakery



- The Hive Café social enterprise has partnered with the Feel Good Bakery social enterprise
- The Feel Good Bakery provide employment and training opportunities for young people who are out of work
- The Hive Café sells Feel Good Bakery sandwiches and provides them with produce
- The Feel Good Bakery provides us with healthy, local sandwiches made fresh each morning
- Each sandwich sold provides a meal for a child in a developing country

Market Day at The Hive Café



- Bread Angels are a community of local home bakers. Growhampton are facilitating a bread club at The Hive Cafes' Thursday Market days



Sharing the good news

- Partnership with the Wandsworth Guardian has ensured Growthampton is able to share advice on organic growing with the local community

The screenshot shows the Wandsworth Guardian website. The main article is titled "How to grow organic at home" by Joel Williams, published on Wednesday 2nd July 2014. The article discusses organic gardening and growing techniques. Below the article is a sidebar with "My top 5 organic practices" and a "20% OFF Your First Treatment - Choose GUARDIAN" offer. The website also features a "FEATURED JOBS" section, "MOST READ" and "MOST READ YESTERDAY" lists, and a "WHAT'S ON" calendar for July 2014.

What's next



- Working with the Roehampton community to establish a veggie box scheme





NUSU
NEWCASTLE UNIVERSITY
STUDENTS' UNION
LIVE · WORK · PLAY

nus
Students'
Green Fund

Newcastle University
STUDENT COMMUNITY ACTION NEWCASTLE

SGF Community Engagement

**Newcastle University
Students' Union**

Red Kellie – SCAN Project Worker

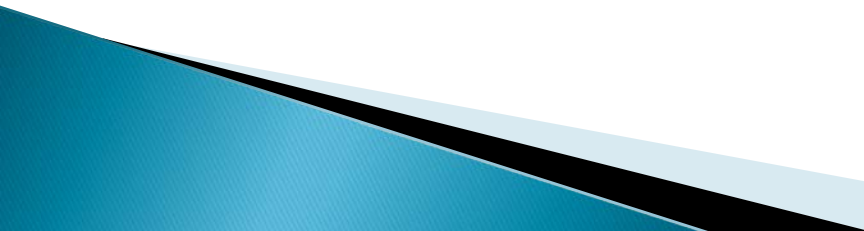
nus

Students'

Green Fund

**Environment
Community Engagement
Sustainable Development
Social Enterprise**

SGF @ Newcastle – Project Aims

- ▶ To build on our environmental and sustainable beliefs and strengthen our University partnership
 - ▶ To increase student participation in green activity and educate others through practical shared action
 - ▶ To promote a deeper understanding of sustainable food sourcing, growth, distribution and consumption amongst the student population
 - ▶ To capitalise on students' drive, enthusiasm and skills to spread the sustainable living message to the wider community
 - ▶ To leave a lasting legacy for the future and establish new community partnerships.
- 

SGF Projects & Partnerships



RUPERT'S WOOD



“It was brilliant to get the opportunity to camp out in the wilds – it was great for the young people to get an experience of wilderness camping and cooking on a campfire – totally different for them”



Our veg garden at Rupert's Wood enables students to help children experience food growing, harvesting fresh produce and cooking it up on the campfire!



Market Garden Allotment



SGF Green Markets

- Newcastle students are selling local, student-grown fruit, vegetables and herbs to students, university staff and the wider public.
- Over 1800 students, staff and local residents have perused and purchased local, sustainable produce from the Green markets so far.





Guerrilla Gardening



Green Grants

- ▶ A £20,000 fund to enable students to fund new projects that will have a positive impact on young people's thinking about sustainability.
- ▶ Grants are awarded by a panel of students and can range from £200 – £2000.
- ▶ The projects encourage children, young people, students and the wider community to reduce, reuse, recycle and rethink what they do with waste, water, air, energy and biodiversity.





GO **20** **IN OUR COMMUNITY**

Giant Walking BUS

B

- Chemical Engineering Dept.
- SaGE
- Local breweries
- Brewlab
- Science City
- Food Marketing Dept.
- Careers Service / Rise Up

- Newcastle & District Beekeeping Association
- Wildlife Trust
- Lord Redesdale
- Newcastle YMCA
- Greening Wingrove

- Local residents & ploholders
- Real Food World
- Federation of Inner City Farms
- NE Organic Growers
- Sustrans
- Newcastle EATS & Bistro
- Food Nation
- NUfoods
- Soil Society

- Jesmond Community Orchard
- Harvest & Help
- Community Links
- Friends of Leazes Park
- Newcastle City Council
- Friends of Brandling Park

Beekeeping & Orchards

Stu Bru Sustainable Microbrewery

Guerrilla Gardening

nus Students' Green Fund
@NEWCASTLE UNIVERSITY

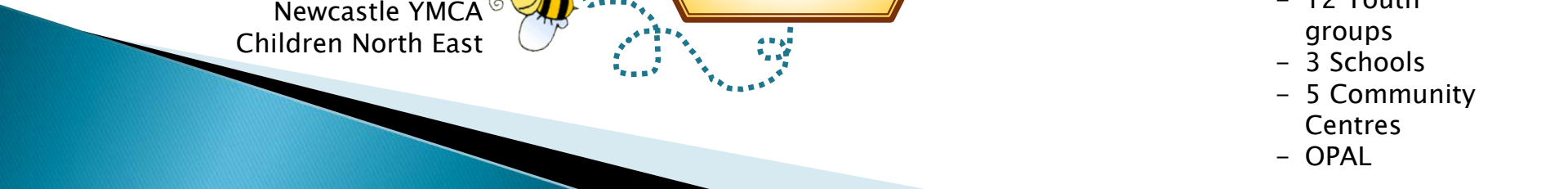
Allotment Garden & Green Markets

EXPERIENCE·EXPLORE
RUPERT'S WOOD
ENVIRONMENT

Green Grants Fund

- St. Cuthbert's High School
- Throckley Primary School
- West End Women & Girls Centre
- Time Exchange
- Newcastle YMCA
- Children North East

- 12 Youth groups
- 3 Schools
- 5 Community Centres
- OPAL





Leeds University Union
Leeds Green Exchange

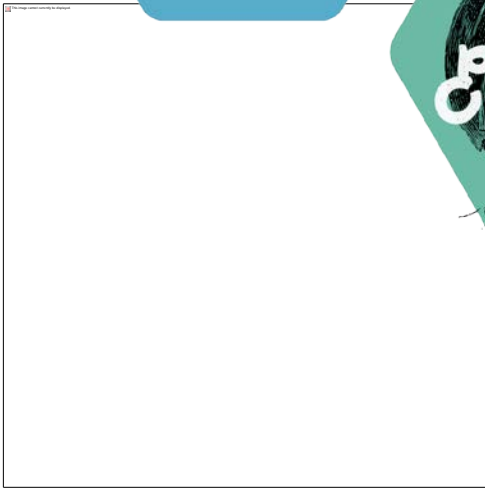


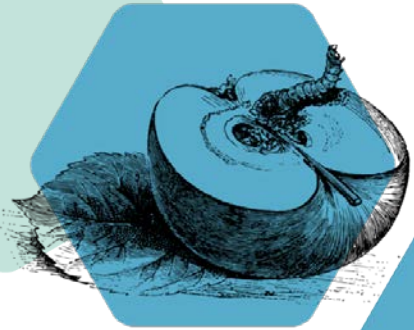
**DEVELOP
FUND &
TRANSFORM**

**TALK
CONNECT &
SHAPE**



**LIVE
SHOP &
EXPLORE**





**DEVELOP
FUND &
TRANSFORM**



Community



**LIVE
SHOP &
EXPLORE**



Student Fund

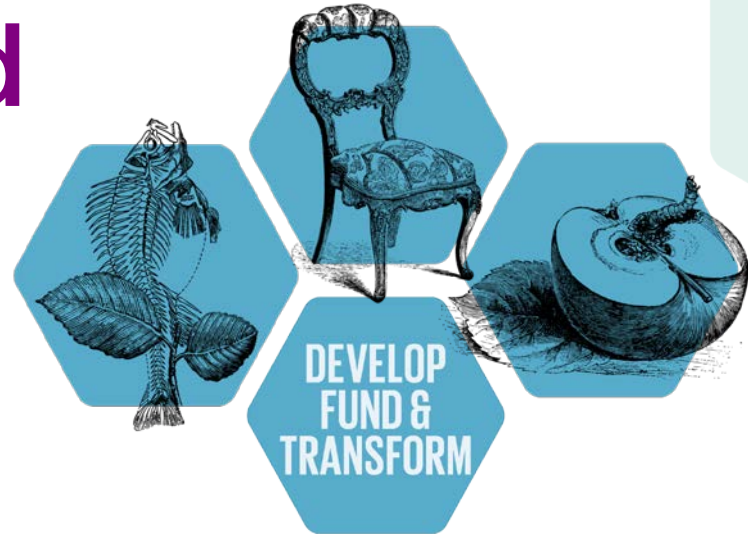
60,000 available over two years

Project grants of around £1000

Enhance employability, commitment to sustainability and generate volunteering and mass engagement opportunities

Any SU in Leeds

Collaborations with Community groups



Home GROW Your Own

Join us to learn how to plant and care for edible plants! You can select your varieties, plant them, and then take them home! All for FREE.



Please bring any old large plastic bottles, planters or pots you have! Wear clothes you don't mind getting muddy, and wellies or boots.

SATURDAY 22nd of March, SATURDAY 12th of April, SATURDAY 26th of April, 13:00-17:00

For more information, please contact Emma Simpson at mlls@leeds.ac.uk or @Woodhouserep on Twitter!



"I felt that a community growing project could help bring the two different resident groups together, while simultaneously creating more green spaces in LS6. These green spaces could be a focal point for the community, garnering greater affection and care for the area, and becoming something positive that persisted even after students had moved on or changed homes."



"The Green Exchange gave me the funding and contacts I needed to help form the idea, buy in all the materials, and advertise for the growing days. It's been an amazing learning experience, that has taught me an incredible amount about project management, budgeting and promotion."

Eat, Learn & Grow

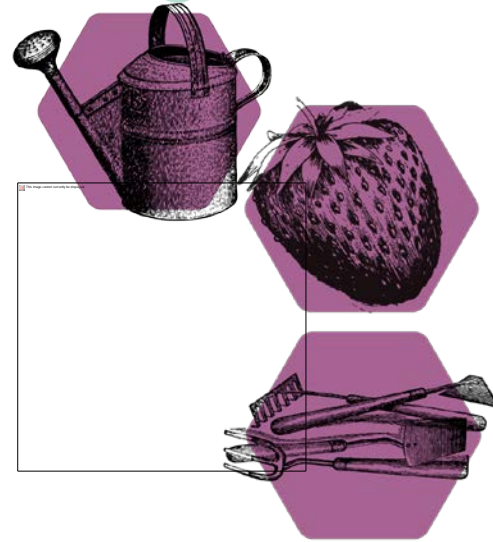
Bardon Grange walled garden

Community members and students

Relationships and learning

Salad enterprise

Workshops





"the garden has grown so much!! its so good to look back at this picture and see how it has developed and the amount of food we are now producing!"

Live, Shop & Explore



Encouraging students to engage with the community in a sustainable way through shopping locally and supporting independent businesses

Support existing initiatives at LUU like Leave Leeds Tidy.

Leave Leeds Tidy

Student Changeover
project


Student Champions

Year round charity
shop

Over 70 tonnes
diverted from landfill

Community free shop
in partnership with
food cycle





“Many people’s tenancies end on the last day of June, which can generate a lot of waste in the area but it is great that we can work in partnership with other student unions, universities, local charities and the council to ensure that we can reuse as much as possible. It is a great opportunity for everyone to get involved, give back to their community and take pride into their area. The volunteering opportunities in the charity also allow people to develop new skills from creatively recycling old items to communications.”

- Frankie O’Byrne, Community Officer.



STAR Bikes Leeds @star_bikes · Jun 24

Many thanks to all those who have retweeted about donating bikes, thanks @LeaveLeedsTidy for your tireless efforts!

Expand

← Reply ↻ Retweeted ★ Favorite ...



Rosie Kightly Stoker @Rosamaphone · Jun 30

@LeaveLeedsTidy One of the best things going in Leeds! Simple yet effective & for brilliant causes! Attitudes will & have changed! #AceStuff

It has been great to be a part of something that has such a positive influence on the lives of both students and local residents in the city. We want to minimise the impact that the student changeover period has on the local community through raising awareness about the environmental and advice services on offer through the university unions, the universities and the council. And in doing so, we hope to change perceptions and ideas about recycling and waste in the long term.

– Rosie Collington, LLT communications assistant.



Any questions?